

0555/2/2022
GEOL. O/L

**SOUTH WEST REGIONAL MOCK EXAMINATION
GENERAL EDUCATION**

**THE TEACHERS' RESOURCE UNIT (TRU)
IN COLLABORATION WITH
THE REGIONAL INSPECTORATES OF PEDAGOGY AND
THE SOUTH WEST GEOLOGY SUBJECT TEACHERS' ASSOCIATIONS
(SOWEGETA)**

WEDNESDAY 06/04/2022 (Afternoon)

ORDINARY LEVEL

Subject Title	Geology
Paper Number	Paper 2
Subject Code Number	0555

Two and a half hours

INSTRUCTIONS TO CANDIDATES

Answer five questions: Choose Two from Section A, Two from Section B, Section C is compulsory.

You are reminded of the necessity for good English and orderly presentation of your work.

1. a) Define the following terms as used in Geology.

i) Galaxy. -----

----- (2marks)

ii) Meteorite. -----

----- (2marks)

b. List the Jovian planets with increasing distance from the sun.

----- (2marks)

c. State the differences between physical and chemical weathering.

----- (4marks)

(Total 10marks)

2. a) Define a mineral.

----- (2marks)

b) Define the terms luster and hardness which are physical properties of minerals.
i. Luster -----
----- (2marks)

ii. Hardness -----
----- (2marks)

c. i. State the principle of cross cutting relationship-----

----- (2 marks)

ii. Describe graded bedding in sedimentary rocks -----

----- (2 marks)
(Total 10marks)

3. a. List any three mountains along the Cameroon volcanic line (CVL).

----- (1.5marks)

b. Name two localities in Cameroon where you can find basic igneous rocks.

----- (2marks)

c. List any three processes associated with convergent plate boundaries.

----- (3marks)

d. Draw a Bivalve shell and label any three parts.

(3.5marks)

(Total 10marks)

SECTION B

4. a) Give two differences between the oceanic and the continental crust.

.....
.....
.....
.....
.....(4marks)

b. List any two features of wind erosion in deserts.

.....
.....(2marks)

c. Attempt a classification of igneous rocks based on grain size.

.....
.....
.....
.....(4marks)

(Total 10marks)

5. a) What do you understand by the term fossil?

.....
.....
.....(2marks)

b) List two conditions that will favour the preservation of fossils.

i).....
.....
ii).....
.....(2marks)

c) Define the following terms as used in Crystallography.

i) Crystallographic axes.

.....
.....
.....(2marks)

ii) Interfacial angle.

.....
.....(2marks)

d. Give the difference between earthquake intensity and earthquake magnitude.

.....
.....
.....(2marks)

(Total 10marks)

6. a) Define the following terms.
i) Gangue mineral.

----- (2marks)

- ii) An ore.

----- (2marks)

- b) Differentiate between stress and strain.

----- (3marks)

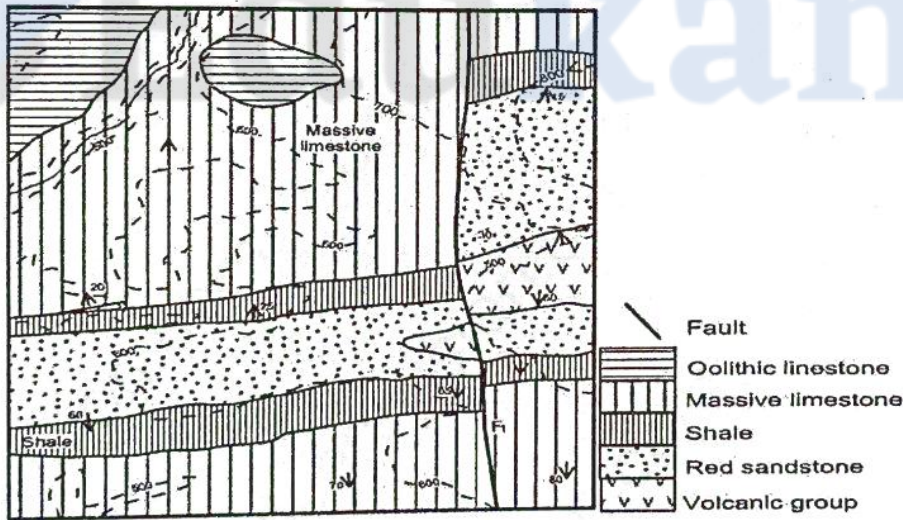
- c) List the factors that influence the rate of metamorphism.

----- (3marks)

(Total 10marks)

SECTION C

7. a) Study the map extract below and answer questions 7.a., i, ii and iii



- i) State with reasons the type of fold on the map

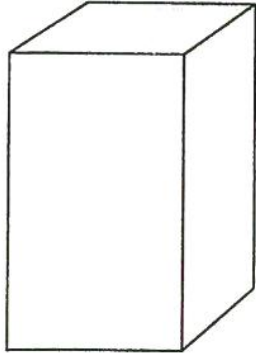
----- (2marks)

- ii) State the trend of the fold

----- (2marks)

iii) Identify the type of fault on the map -----(2marks)

b) Study the crystal model below and answer ^{the} questions that follow:



- i) Insert the crystallographic axes----- (1.5marks)
- ii) Insert the planes of symmetry----- (2.5marks)
- iii) State the crystal system to which the crystal belong----- (1mark)

c) Give the diagnostic properties of the following minerals;

- i) Calcite ----- (1mark)
- ii) Orthoclase ----- (2marks)

d) Describe Limestones and basalts based on the following;

i) Composition:

Limestones ----- (2 marks)

Basalts ----- (2 marks)

ii) Texture

Limestones ----- (1mark)

Basalt ----- (1mark)

(Total 20marks)

STOP

GO BACK AND CHECK YOUR WORK