

Markscheme

May 2019

Mathematics

Standard level

Paper 2

18 pages

No part of this product may be reproduced in any form or by any electronic or mechanical means, including information storage and retrieval systems, without written permission from the IB.

Additionally, the license tied with this product prohibits commercial use of any selected files or extracts from this product. Use by third parties, including but not limited to publishers, private teachers, tutoring or study services, preparatory schools, vendors operating curriculum mapping services or teacher resource digital platforms and app developers, is not permitted and is subject to the IB's prior written consent via a license. More information on how to request a license can be obtained from <http://www.ibo.org/contact-the-ib/media-inquiries/for-publishers/guidance-for-third-party-publishers-and-providers/how-to-apply-for-a-license>.

Aucune partie de ce produit ne peut être reproduite sous quelque forme ni par quelque moyen que ce soit, électronique ou mécanique, y compris des systèmes de stockage et de récupération d'informations, sans l'autorisation écrite de l'IB.

De plus, la licence associée à ce produit interdit toute utilisation commerciale de tout fichier ou extrait sélectionné dans ce produit. L'utilisation par des tiers, y compris, sans toutefois s'y limiter, des éditeurs, des professeurs particuliers, des services de tutorat ou d'aide aux études, des établissements de préparation à l'enseignement supérieur, des fournisseurs de services de planification des programmes d'études, des gestionnaires de plateformes pédagogiques en ligne, et des développeurs d'applications, n'est pas autorisée et est soumise au consentement écrit préalable de l'IB par l'intermédiaire d'une licence. Pour plus d'informations sur la procédure à suivre pour demander une licence, rendez-vous à l'adresse <http://www.ibo.org/fr/contact-the-ib/media-inquiries/for-publishers/guidance-for-third-party-publishers-and-providers/how-to-apply-for-a-license>.

No se podrá reproducir ninguna parte de este producto de ninguna forma ni por ningún medio electrónico o mecánico, incluidos los sistemas de almacenamiento y recuperación de información, sin que medie la autorización escrita del IB.

Además, la licencia vinculada a este producto prohíbe el uso con fines comerciales de todo archivo o fragmento seleccionado de este producto. El uso por parte de terceros —lo que incluye, a título enunciativo, editoriales, profesores particulares, servicios de apoyo académico o ayuda para el estudio, colegios preparatorios, desarrolladores de aplicaciones y entidades que presten servicios de planificación curricular u ofrezcan recursos para docentes mediante plataformas digitales— no está permitido y estará sujeto al otorgamiento previo de una licencia escrita por parte del IB. En este enlace encontrará más información sobre cómo solicitar una licencia: <http://www.ibo.org/es/contact-the-ib/media-inquiries/for-publishers/guidance-for-third-party-publishers-and-providers/how-to-apply-for-a-license>.

Instructions to Examiners

Abbreviations

- M** Marks awarded for attempting to use a valid **Method**; working must be seen.
- (M)** Marks awarded for a valid **Method**; may be implied by **correct** subsequent working.
- A** Marks awarded for an **Answer** or for **Accuracy**; often dependent on preceding **M** marks.
- (A)** Marks awarded for an **Answer** or for **Accuracy**; may be implied by **correct** subsequent working.
- R** Marks awarded for clear **Reasoning**.
- N** Marks awarded for **correct** answers if **no** working shown.
- AG** Answer given in the question and so no marks are awarded.

Using the markscheme

1 General

Mark according to RM assessor instructions.

2 Method and Answer/Accuracy marks

- Do **not** automatically award full marks for a correct answer; all working **must** be checked, and marks awarded according to the markscheme.
- It is generally not possible to award **M0** followed by **A1**, as **A** mark(s) depend on the preceding **M** mark(s), if any. An exception to this rule is when work for **M1** is missing, as opposed to incorrect (see point 4).
- Where **M** and **A** marks are noted on the same line, eg **M1A1**, this usually means **M1** for an **attempt** to use an appropriate method (eg substitution into a formula) and **A1** for using the **correct** values.
- Where there are two or more **A** marks on the same line, they may be awarded independently; so if the first value is incorrect, but the next two are correct, award **A0A1A1**.
- Where the markscheme specifies (**M2**), **N3**, etc., do **not** split the marks, unless there is a note.
- Most **M** marks are for a **valid** method, ie a method which can lead to the answer: it must indicate some form of progress towards the answer.
- Once a correct answer to a question or part-question is seen, ignore further correct working. However, if further working indicates a lack of mathematical understanding do not award final **A1**.

3 N marks

If no working shown, award N marks for correct answers. In this case, ignore mark breakdown (M, A, R).

- Do **not** award a mixture of **N** and other marks.
- There may be fewer **N** marks available than the total of **M**, **A** and **R** marks; this is deliberate as it penalizes candidates for not following the instruction to show their working.
- There may not be a direct relationship between the **N** marks and the implied marks. There are times when all the marks are implied, but the **N** marks are not the full marks: this indicates that we want to see some of the working, without specifying what.
- For consistency within the markscheme, **N** marks are noted for every part, even when these match the mark breakdown.

- If a candidate has incorrect working, which somehow results in a correct answer, do **not** award the **N** marks for this correct answer. However, if the candidate has indicated (usually by crossing out) that the working is to be ignored, award the **N** marks for the correct answer.

4 Implied and must be seen marks

*Implied marks appear in **brackets** eg (M1).*

- Implied marks can only be awarded if the work is seen or if implied in subsequent working (a correct final answer does not necessarily mean that the implied marks are all awarded). There are questions where some working is required, but as it is accepted that not everyone will write the same steps, all the marks are implied, but the **N** marks are not the full marks for the question.
- Normally the correct work is seen in the next line.
- Where there is an (**M1**) followed by **A1** for each correct answer, if no working shown, one correct answer is sufficient evidence to award the (**M1**).

*Must be seen marks appear without **brackets** eg M1.*

- Must be seen marks can only be awarded if the work is seen.
- If a must be seen mark is not awarded because work is missing (as opposed to **M0** or **A0** for incorrect work) all subsequent marks may be awarded if appropriate.

5 Follow through marks (only applied after an error is made)

*Follow through (FT) marks are awarded where an incorrect answer (final or intermediate) from one **part** of a question is used correctly in **subsequent** part(s) or subpart(s). Usually, to award **FT** marks, **there must be working present** and not just a final answer based on an incorrect answer to a previous part. However, if the only marks awarded in a subpart are for the **final** answer, then **FT** marks should be awarded if appropriate. Examiners are expected to check student work in order to award **FT** marks where appropriate.*

- Within a question part, once an **error** is made, no further **A** marks can be awarded for work which uses the error, but **M** and **R** marks may be awarded if appropriate. (However, as noted above, if an **A** mark is not awarded because work is missing, all subsequent marks may be awarded if appropriate).
- Exceptions to this rule will be explicitly noted on the markscheme.
- If the question becomes much simpler because of an error then use discretion to award fewer **FT** marks.
- If the error leads to an inappropriate value (eg probability greater than 1, use of $r > 1$ for the sum of an infinite GP, $\sin \theta = 1.5$, non-integer value where integer required), do not award the mark(s) for the final answer(s).
- The markscheme may use the word “**their**” in a description, to indicate that candidates may be using an incorrect value.
- If a candidate makes an error in one part, but gets the correct answer(s) to subsequent part(s), award marks as appropriate, unless the question says hence. It is often possible to use a different approach in subsequent parts that does not depend on the answer to previous parts.
- In a “show that” question, if an error in a previous subpart leads to not showing the required answer, do not award the final **A1**. Note that if the error occurs within the same subpart, the **FT** rules may result in further loss of marks.

6 Mis-read

If a candidate incorrectly copies information from the question, this is a mis-read (**MR**). A candidate should be penalized only once for a particular mis-read. Use the **MR** stamp to indicate that this is a misread. Do not award the first mark in the question, even if this is an **M** mark, but award all others (if appropriate) so that the candidate only loses one mark for the misread.

- If the question becomes much simpler because of the **MR**, then use discretion to award fewer marks.
- If the **MR** leads to an inappropriate value (eg probability greater than 1, use of $r > 1$ for the sum of an infinite GP, $\sin \theta = 1.5$, non-integer value where integer required), do not award the mark(s) for the final answer(s).
- Miscopying of candidates' own work does **not** constitute a misread, it is an error.

7 Discretionary marks (d)

An examiner uses discretion to award a mark on the rare occasions when the markscheme does not cover the work seen. In such cases the annotation **DM** should be used and a brief **note** written next to the mark explaining this decision.

8 Alternative methods

Candidates will sometimes use methods other than those in the markscheme. Unless the question specifies a method, other correct methods should be marked in line with the markscheme. If in doubt, contact your team leader for advice.

- Alternative methods for complete parts are indicated by **METHOD 1**, **METHOD 2**, etc.
- Alternative solutions for parts of questions are indicated by **EITHER . . . OR**. Where possible, alignment will also be used to assist examiners in identifying where these alternatives start and finish.

9 Alternative forms

Unless the question specifies otherwise, **accept** equivalent forms.

- As this is an international examination, accept all alternative forms of **notation**.
- In the markscheme, equivalent **numerical** and **algebraic** forms will generally be written in brackets immediately following the answer.
- In the markscheme, **simplified** answers, (which candidates often do not write in examinations), will generally appear in brackets. Marks should be awarded for either the form preceding the bracket or the form in brackets (if it is seen).

10 Calculators

A GDC is required for paper 2, but calculators with symbolic manipulation features (eg TI-89) are not allowed.

Calculator notation The mathematics SL guide says:

Students must always use correct mathematical notation, not calculator notation.

Do **not** accept final answers written using calculator notation. However, do not penalize the use of calculator notation in the working.

11 Style

The markscheme aims to present answers using good communication, eg if the question asks to find the value of k , the markscheme will say $k = 3$, but the marks will be for the correct value 3 – there is usually no need for the “ $k =$ ”. In these cases, it is also usually acceptable to have

another variable, as long as there is no ambiguity in the question, eg if the question asks to find the value of p and of q , then the student answer needs to be clear. Generally, the only situation where the full answer is required is in a question which asks for equations – in this case the markscheme will say “must be an equation”.

*The markscheme often uses words to describe what the marks are for, followed by examples, using the eg notation. These examples are not exhaustive, and examiners should check what candidates have written, to see if they satisfy the description. Where these marks are **M** marks, the examples may include ones using poor notation, to indicate what is acceptable.*

12 Candidate work

If a candidate has drawn a line through work on their examination script, or in some other way crossed out their work, do not award any marks for that work.

Candidates are meant to write their answers to Section A on the question paper (QP), and Section B on answer booklets. Sometimes, they need more room for Section A, and use the booklet (and often comment to this effect on the QP), or write outside the box. That is fine, and this work should be marked.

The instructions tell candidates not to write on Section B of the QP. Thus they may well have done some rough work here which they assume will be ignored. If they have solutions on the answer booklets, there is no need to look at the QP. However, if there are whole questions or whole part solutions missing on answer booklets, please check to make sure that they are not on the QP, and if they are, mark those whole questions or whole part solutions that have not been written on answer booklets.

13. Diagrams

The notes on how to allocate marks for sketches usually refer to passing through particular points or having certain features. These marks can only be awarded if the sketch is approximately the correct shape. All values given will be an approximate guide to where these points/features occur. In some questions, the first **A1** is for the shape, in others, the marks are only for the points and/or features. In both cases, unless the shape is approximately correct, no marks can be awarded (unless otherwise stated). However, if the graph is based on previous calculations, **FT** marks should be awarded if appropriate.

14. Accuracy of Answers

If the level of accuracy is specified in the question, a mark will be allocated for giving the final answer to the required accuracy. When this is not specified in the question, all numerical answers should be given exactly or correct to three significant figures.

Do not accept unfinished numerical final answers such as $3/0.1$ (unless otherwise stated). As a rule, numerical answers with more than one part (such as fractions) should be given using integers (eg $6/8$). Calculations which lead to integers should be completed, with the exception of fractions which are not whole numbers. Intermediate values do not need to be given to the correct three significant figures. But, if candidates work with rounded values, this could lead to an incorrect answer, in which case award A0 for the final answer. Where numerical answers are required as the final answer to a part of a question in the markscheme, the markscheme will show

- a truncated 6 sf value
- the exact value if applicable, the correct 3 sf answer

Section A

1. (a) evidence of finding $\frac{\sum x}{n}$ (M1)
- eg $\frac{0.3+0.4+3+\dots+10}{10}, \frac{48.2}{10}$
- $\bar{x} = 4.82$ (exact) **A1 N2**
[2 marks]
- (b) $p = 4.25$ (exact) **A1 N1**
[1 mark]
- (c) valid approach (M1)
- eg $Q_3 - Q_1$ 3–8, 3 to 8
- IQR = 5 **A1 N2**
[2 marks]
- Total [5 marks]**
2. (a) vertex is (-10, 15) **A1A1 N1N1**
[2 marks]
- (b) valid approach (M1)
- eg $f(0) = -20, -20 = a(0+10)^2 + 15$
- $a = -0.35$ (exact) **A1 N2**
[2 marks]
- (c) valid approach (M1)
- eg $f(8), -0.35(8+10)^2 + 15$
- $b = -98.4$ (exact) (accept $f(8) = -98.4$) **A1 N2**
[2 marks]
- Total [6 marks]**

3. (a) choosing product rule (M1)

eg $uv' + vu'$, $(x^2)'(e^{3x}) + (e^{3x})'x^2$

correct derivatives (must be seen in the rule) A1A1

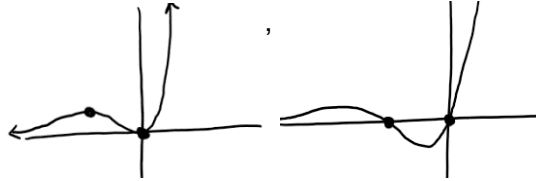
eg $2x$, $3e^{3x}$

$f'(x) = 2xe^{3x} + 3x^2e^{3x}$

A1 N4
[4 marks]

(b) valid method (M1)

eg $f'(x) = 0$,

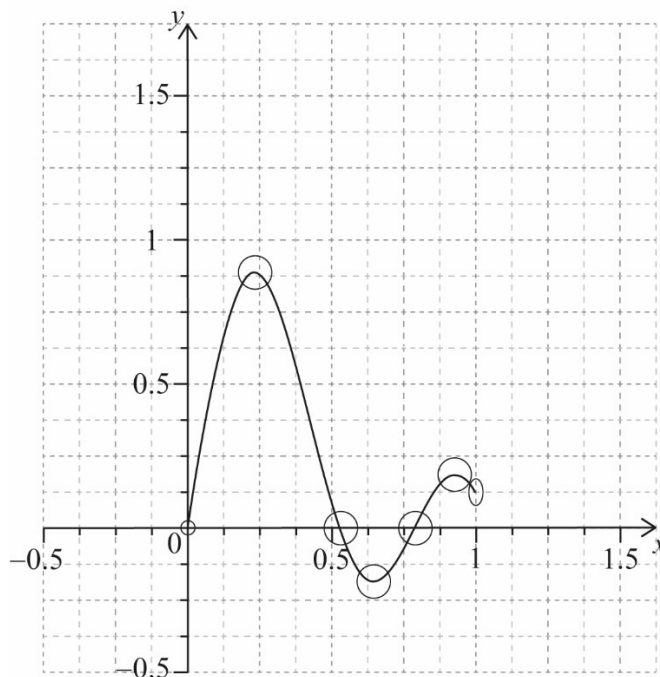


$a = -0.667 \left(= -\frac{2}{3} \right)$ (accept $x = -0.667$)

A1 N2
[2 marks]

Total [6 marks]

4. (a)



A1A1A1

N3

Note: Only if the shape is approximately correct with exactly 2 maximums and 1 minimum on the interval $0 \leq x \leq 1$, award the following:
A1 for correct domain with both endpoints within circle and oval.
A1 for passing through the other x -intercepts within the circles.
A1 for passing through the three turning points within circles (ignore x -intercepts and extrema outside of the domain).

[3 marks]

(b) evidence of reasoning (may be seen on graph)

(M1)

eg $f'' = 0$, $(0.524, 0)$, $(0.785, 0)$

0.523598, 0.785398

$$x = 0.524 \left(= \frac{\pi}{6} \right), x = 0.785 \left(= \frac{\pi}{4} \right)$$

A1A1

N3

Note: Award **M1A1A0** if any solution outside domain (eg $x = 0$) is also included.

[3 marks]

(c) $0.524 < x < 0.785$ $\left(\frac{\pi}{6} < x < \frac{\pi}{4} \right)$

A2

N2

Note: Award **A1** if any correct interval outside domain also included, unless additional solutions already penalized in (b).
Award **A0** if any incorrect intervals are also included.

[2 marks]

Total [8 marks]

5. (a) valid approach **(M1)**
eg correct value for a or b (ignore incorrect labels)
 $a = 6.92986, b = 8.80769$
 $a = 6.93, b = 8.81$ (accept $y = 6.93x + 8.81$) **A1A1 N3**
[3 marks]
- (b) valid approach **(M1)**
eg $750 = x + y$, edge + interior = 750
correct working **(A1)**
eg $750 - x = 6.9298x + 8.807$, 93.4684
93 (pieces) (accept 94) **A1 N3**
- [3 marks]**
- Total [6 marks]**

6. valid approach for expansion (must have correct substitution for parameters, but accept an incorrect value for r) (M1)

eg $\binom{n}{r}(x^2)^{n-r}(1.2)^r, \binom{n}{0}(x^2)^n + \binom{n}{1}(x^2)^{n-1}(1.2) + \binom{n}{2}(x^2)^{n-2}(1.2)^2 + \dots$

attempt to identify correct term (M1)

eg $2r = 6, n - r = 3, \binom{n}{3}, \binom{n}{n-3}$

correct expression (A1)

eg $\binom{n}{n-3} \times 1.2^{n-3} x^6, \binom{n}{n-3} \times 1.2^{n-3}$

EITHER (solving inequality)

attempt to set up inequality in terms of n (accept equation) M1

eg $\binom{n}{3} \times 1.2^{n-3} > 200\,000, 1.2^{n-3} \binom{n}{3} x^6 = 200\,000$

correct working for binomial coefficient (may be seen in equation) (A1)

eg $\frac{n(n-1)(n-2)(n-3)!}{3!(n-3)!}, \frac{n(n-1)(n-2)}{6} \times 1.2^{n-3} = 200\,000$

$n > 26.4959$ (accept 26.4959 or $n = 26.4959$) A1

$n = 27$ A1 N2

Note: If no working shown, award **N1** for 26.4959.

OR (using table)

valid approach (M1)

eg $\binom{n}{3} \times 1.2^{n-3} > 200\,000$, one correct coefficient of x^6 for a value of n

correct crossover values for $n = 26$ and $n = 27$ A1A1

eg 172243, 232528

$n = 27$ A1 N2

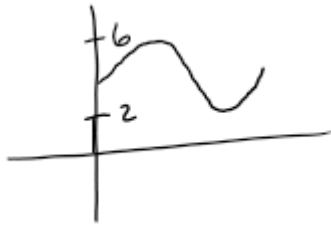
[7 marks]

7. (a) attempt to add corresponding terms **(M1)**
 eg $2+2, 6+(-6), 2(3)^{n-1}+2(-3)^{n-1}$
- correct value for w_5 **(A1)**
 eg 324
- 4, 36, 324 (accept $4+36+324$) **A1 N3**
- [3 marks]**
- (b) (i) valid approach **(M1)**
 eg $4 \times r^1 = 36, 4 \times 9^{n-1}$
- $r = 9$ (accept $\sum_{k=0}^m 4 \times 9^k$; m may be incorrect) **A1 N2**
- (ii) recognition that 225 terms of w_n consists of 113 non-zero terms **(M1)**
 eg $\sum_1^{113}, \sum_0^{112}, 113$
- $m = 112$ (accept $\sum_{k=0}^{112} 4 \times r^k$; r may be incorrect) **A1 N2**
- [4 marks]**
- Total [7 marks]**

Section B

8. (a) valid attempt to find range (M1)

eg , max = 6 min = 2 ,



2 sin(3 * pi/6) + 4 and 2 sin(3 * pi/2) + 4, 2(1) + 4 and 2(-1) + 4,

k = 2, m = 6

A1A1 N3

[3 marks]

(b) 10 ≤ y ≤ 30

A2 N2

[2 marks]

(c) (i) evidence of substitution (may be seen in part (b))

(M1)

eg 5(2 sin(3(2x)) + 4), 3(2x)

b = 6, c = 20 (accept 10 sin(6x) + 20)

A1A1 N3

Note: If no working shown, award N2 for one correct value.

(ii) correct working

(A1)

eg 2pi/b

1.04719

2pi/6 (= pi/3), 1.05

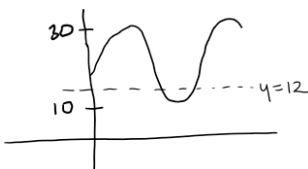
A1 N2

[5 marks]

(d) valid approach

(M1)

eg , sin^-1(-8/10), 6x = -0.927, -0.154549, x = 0.678147



Note: Award M1 for any correct value for x or 6x which lies outside the domain of f .

3.81974, 4.03424

x = 3.82, x = 4.03 (do not accept answers in degrees)

A1A1 N3

Total [13 marks]

9. (a) attempt to find $f'(8)$ **(M1)**
 eg $f'(x), y', -16x^{-2}$
 -0.25 (exact) **A1 N2**
[2 marks]
- (b) $\mathbf{u} = \begin{pmatrix} 4 \\ -1 \end{pmatrix}$ or any scalar multiple **A2 N2**
[2 marks]
- (c) correct scalar product and magnitudes **(A1)(A1)(A1)**
 scalar product = $1 \times 4 + 1 \times -1$ (= 3)
 magnitudes = $\sqrt{1^2 + 1^2}, \sqrt{4^2 + (-1)^2}$ ($= \sqrt{2}, \sqrt{17}$)
 substitution of **their** values into correct formula **(M1)**
 eg $\frac{4-1}{\sqrt{1^2+1^2}\sqrt{4^2+(-1)^2}}, \frac{-3}{\sqrt{2}\sqrt{17}}, 2.1112, 120.96^\circ$
 $1.03037, 59.0362^\circ$
 angle = 1.03, 59.0° **A1 N4**
[5 marks]

continued...

Question 9 continued

(d) (i) attempt to form composite $(f \circ f)(x)$ (M1)

eg $f(f(x)), f\left(\frac{16}{x}\right), \frac{16}{f(x)}$

correct working (A1)

eg $\frac{16}{16/x}, 16 \times \frac{x}{16}$

$(f \circ f)(x) = x$ A1 N2

(ii) $f^{-1}(x) = \frac{16}{x}$ (accept $y = \frac{16}{x}, \frac{16}{x}$) A1 N1

Note: Award **A0** in part (ii) if part (i) is incorrect.

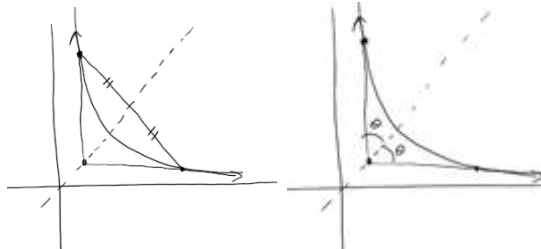
Award **A0** in part (ii) if the candidate has found $f^{-1}(x) = \frac{16}{x}$ by interchanging x and y .

(iii) **METHOD 1**

recognition of symmetry about $y = x$ (M1)

eg

$(2, 8) \Leftrightarrow (8, 2)$



evidence of doubling their angle (M1)

eg $2 \times 1.03, 2 \times 59.0$

$2.06075, 118.072^\circ$

2.06 (radians) $(118$ degrees) A1 N2

continued...

Question 9 continued

METHOD 2

finding direction vector for tangent line at $x = 2$ **(A1)**

eg $\begin{pmatrix} -1 \\ 4 \end{pmatrix}, \begin{pmatrix} 1 \\ -4 \end{pmatrix}$

substitution of **their** values into correct formula (must be from vectors) **(M1)**

eg $\frac{-4-4}{\sqrt{1^2+4^2}\sqrt{4^2+(-1)^2}}, \frac{8}{\sqrt{17}\sqrt{17}}$

2.06075, 118.072°

2.06 (radians) (118 degrees) **A1 N2**

METHOD 3

using trigonometry to find an angle with the horizontal **(M1)**

eg $\tan \theta = -\frac{1}{4}, \tan \theta = -4$

finding both angles of rotation **(A1)**

eg $\theta_1 = 0.244978, 14.0362^\circ, \theta_2 = 1.81577, 104.036^\circ$

2.06075, 118.072°

2.06 (radians) (118 degrees) **A1 N2**

[7 marks]

Total [16 marks]

10. (a) (i) valid approach to find P(one red) (M1)

eg ${}_n C_a \times p^a \times q^{n-a}, B(n, p), 3 \left(\frac{1}{3} \right) \left(\frac{2}{3} \right)^2, \binom{3}{1}$

listing all possible cases for exactly one red (may be indicated on tree diagram)

$P(1 \text{ red}) = 0.444 \left(= \frac{4}{9} \right) [0.444, 0.445]$ A1 N2

(ii) valid approach (M1)

eg $P(X = 2) + P(X = 3), 1 - P(X \leq 1), \text{binomcdf} \left(3, \frac{1}{3}, 2, 3 \right)$

correct working (A1)

eg $\frac{2}{9} + \frac{1}{27}, 0.222 + 0.037, 1 - \left(\frac{2}{3} \right)^3 - \frac{4}{9}$

0.259259

$P(\text{at least two red}) = 0.259 \left(= \frac{7}{27} \right)$ A1 N3

[5 marks]

(b) recognition that winning \$10 means rolling exactly one green (M1)

recognition that winning \$10 also means rolling at most 1 red (M1)

eg "cannot have 2 or more reds"

correct approach A1

eg $P(1G \cap 0R) + P(1G \cap 1R), P(1G) - P(1G \cap 2R),$
 "one green and two yellows or one of each colour"

Note: Because this is a "show that" question, do not award this A1 for purely numerical expressions.

one correct probability for their approach (A1)

eg $3 \left(\frac{1}{3} \right) \left(\frac{1}{3} \right)^2, \frac{6}{27}, 3 \left(\frac{1}{3} \right) \left(\frac{2}{3} \right)^2, \frac{1}{9}, \frac{2}{9}$

correct working leading to $\frac{1}{3}$ A1

eg $\frac{3}{27} + \frac{6}{27}, \frac{12}{27} - \frac{3}{27}, \frac{1}{9} + \frac{2}{9}$

probability = $\frac{1}{3}$ AG N0

[5 marks]

continued...

Question 10 continued

(c) (i) $x = \frac{7}{27}$, 0.259 (check **FT** from (a)(ii)) **A1** **N1**

(ii) evidence of summing probabilities to 1 **(M1)**

eg $\Sigma = 1, x + y + \frac{1}{3} + \frac{2}{9} + \frac{1}{27} = 1, 1 - \frac{7}{27} - \frac{9}{27} - \frac{6}{27} - \frac{1}{27}$

0.148147 (0.148407 if working with **their** x value to 3 sf)

$y = \frac{4}{27}$ (exact), 0.148 **A1** **N2**

[3 marks]

(d) correct substitution into the formula for expected value **(A1)**

eg $-w \cdot \frac{7}{27} + 10 \cdot \frac{9}{27} + 20 \cdot \frac{6}{27} + 30 \cdot \frac{1}{27}$

correct critical value (accept inequality) **A1**

eg $w = 34.2857 \left(= \frac{240}{7} \right), w > 34.2857$

\$40 **A1** **N2**

[3 marks]

Total [16 marks]