

© International Baccalaureate Organization 2021

All rights reserved. No part of this product may be reproduced in any form or by any electronic or mechanical means, including information storage and retrieval systems, without the prior written permission from the IB. Additionally, the license tied with this product prohibits use of any selected files or extracts from this product. Use by third parties, including but not limited to publishers, private teachers, tutoring or study services, preparatory schools, vendors operating curriculum mapping services or teacher resource digital platforms and app developers, whether fee-covered or not, is prohibited and is a criminal offense.

More information on how to request written permission in the form of a license can be obtained from <https://ibo.org/become-an-ib-school/ib-publishing/licensing/applying-for-a-license/>.

© Organisation du Baccalauréat International 2021

Tous droits réservés. Aucune partie de ce produit ne peut être reproduite sous quelque forme ni par quelque moyen que ce soit, électronique ou mécanique, y compris des systèmes de stockage et de récupération d'informations, sans l'autorisation écrite préalable de l'IB. De plus, la licence associée à ce produit interdit toute utilisation de tout fichier ou extrait sélectionné dans ce produit. L'utilisation par des tiers, y compris, sans toutefois s'y limiter, des éditeurs, des professeurs particuliers, des services de tutorat ou d'aide aux études, des établissements de préparation à l'enseignement supérieur, des fournisseurs de services de planification des programmes d'études, des gestionnaires de plateformes pédagogiques en ligne, et des développeurs d'applications, moyennant paiement ou non, est interdite et constitue une infraction pénale.

Pour plus d'informations sur la procédure à suivre pour obtenir une autorisation écrite sous la forme d'une licence, rendez-vous à l'adresse <https://ibo.org/become-an-ib-school/ib-publishing/licensing/applying-for-a-license/>.

© Organización del Bachillerato Internacional, 2021

Todos los derechos reservados. No se podrá reproducir ninguna parte de este producto de ninguna forma ni por ningún medio electrónico o mecánico, incluidos los sistemas de almacenamiento y recuperación de información, sin la previa autorización por escrito del IB. Además, la licencia vinculada a este producto prohíbe el uso de todo archivo o fragmento seleccionado de este producto. El uso por parte de terceros —lo que incluye, a título enunciativo, editoriales, profesores particulares, servicios de apoyo académico o ayuda para el estudio, colegios preparatorios, desarrolladores de aplicaciones y entidades que presten servicios de planificación curricular u ofrezcan recursos para docentes mediante plataformas digitales—, ya sea incluido en tasas o no, está prohibido y constituye un delito.

En este enlace encontrará más información sobre cómo solicitar una autorización por escrito en forma de licencia: <https://ibo.org/become-an-ib-school/ib-publishing/licensing/applying-for-a-license/>.

Environmental systems and societies
Standard level
Paper 2

Wednesday 12 May 2021 (morning)

Candidate session number

2 hours

--	--	--	--	--	--	--	--	--	--

Instructions to candidates

- Write your session number in the boxes above.
- Do not open this examination paper until instructed to do so.
- Section A: answer all questions.
- Section B: answer two questions.
- Answers must be written within the answer boxes provided.
- A calculator is required for this paper.
- The maximum mark for this examination paper is **[65 marks]**.



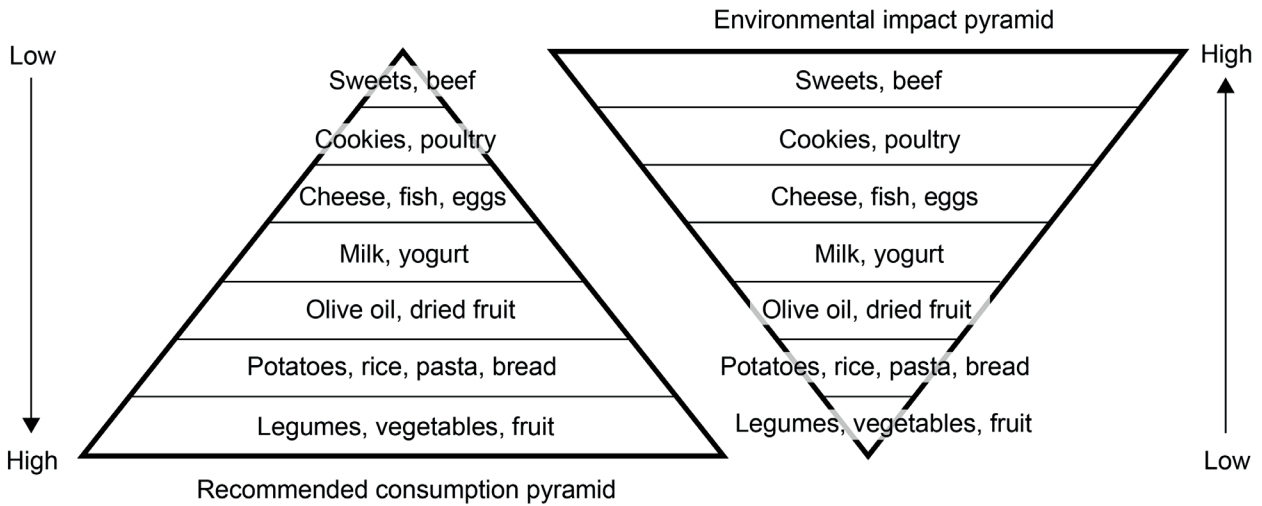
Section A

Answer **all** questions. Answers must be written within the answer boxes provided.

- 1. The figure refers to a typical Western European diet. This example shows recommended consumption of food types (on the basis of health) and the environmental impact of their production.

Figure 1(a): Recommended consumption pyramid

Figure 1(b): Environmental impact pyramid



(a) With reference to **Figures 1(a)** and **1(b)**:

- (i) State the food that has the highest environmental impact. [1]

.....

.....

- (ii) State the food that has the highest recommended consumption. [1]

.....

.....

(This question continues on the following page)



(Question 1 continued)

(b) Describe the relationship between both pyramids in **Figures 1(a)** and **1(b)**. [2]

.....

.....

.....

.....

(c) Identify **two** environmental impacts associated with producing the foods near the base of the recommended consumption pyramid (**Figure 1(a)**). [2]

.....

.....

.....

.....

(d) Describe how foods high on the environmental impact pyramid, shown in **Figure 1(b)**, are likely to affect the ecological footprint of global food production. [2]

.....

.....

.....

.....

(e) Outline **two** reasons why the composition of a typical diet in other regions of the world may differ from the Western European diet shown in **Figure 1(a)**. [2]

.....

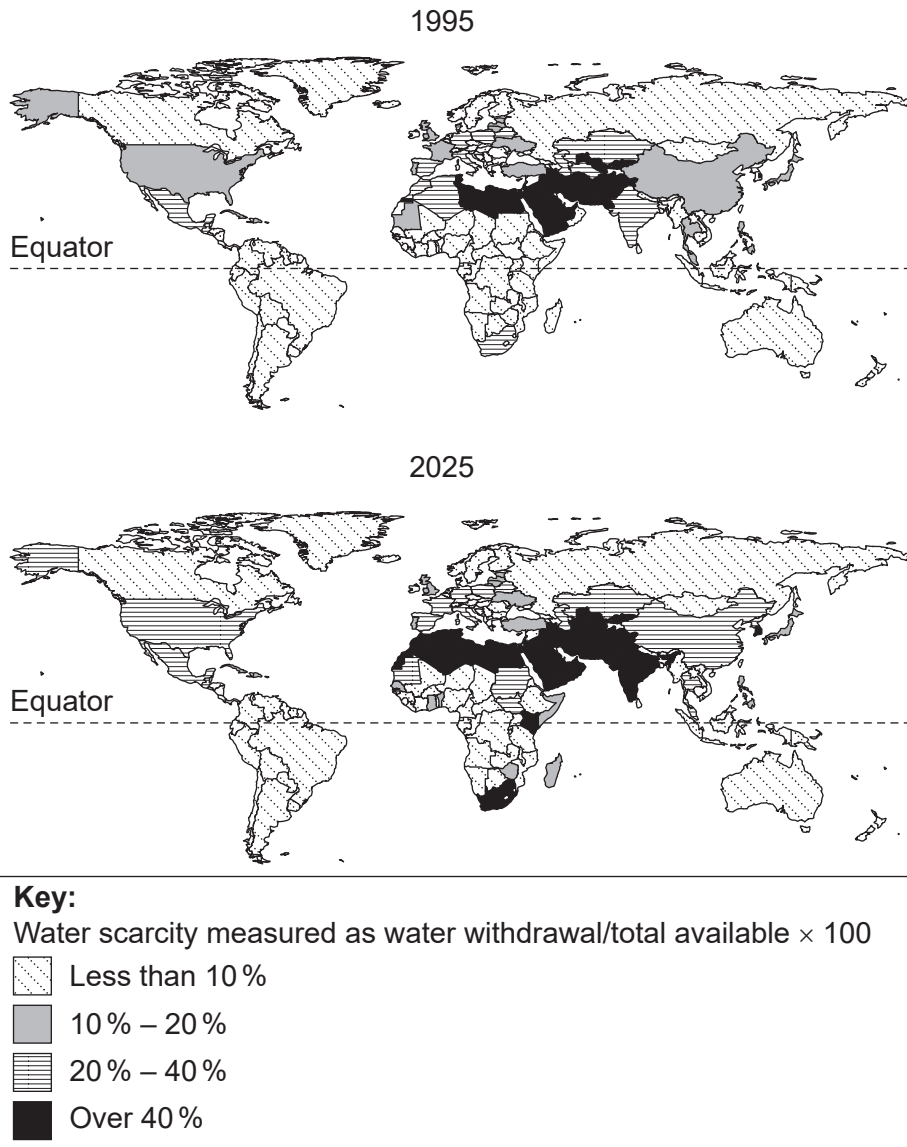
.....

.....

.....



Figure 2: Projected global water scarcity 1995–2025



[Source: With permission from GRID-Arendal. Source adapted.]

2. (a) State the general pattern of change in global water scarcity predicted from 1995 to 2025 as shown in **Figure 2**.

[1]

.....

.....

(This question continues on the following page)



(Question 2 continued)

(b) Identify **two** ways in which climate change may influence the predicted change shown in **Figure 2**. [2]

.....

.....

.....

.....

(c) Identify **two** possible human influences, not related to climate change, that may cause the changes in water scarcity predicted for 2025. [2]

.....

.....

.....

.....

(d) Outline **two** reasons why some countries are unlikely to experience water scarcity. [2]

.....

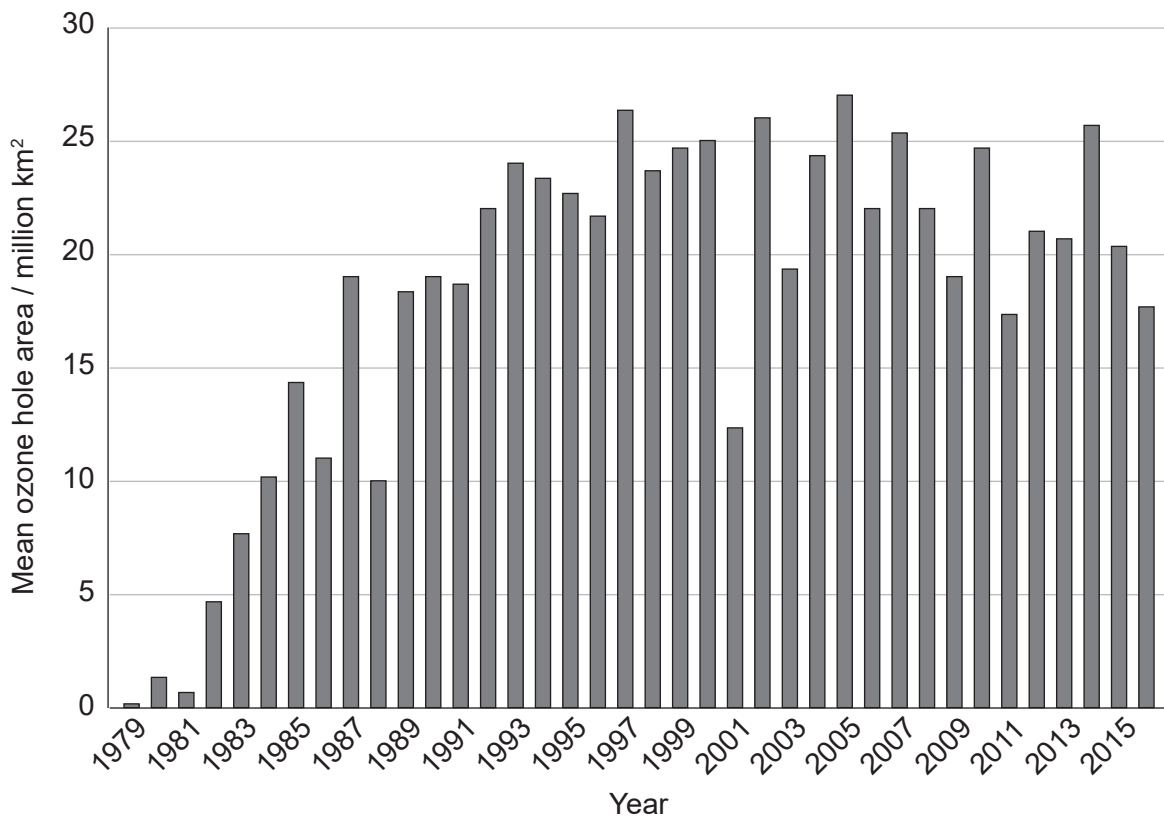
.....

.....

.....



Figure 3: Mean ozone hole area between 1979 and 2016



3. (a) State where the ozone hole referred to in **Figure 3** is located. [1]

.....

.....

(b) Describe the changes in mean ozone hole area between 1979 and 2016. [2]

.....

.....

.....

.....

(This question continues on the following page)



(Question 3 continued)

(c) Identify **one** possible reason for the changes shown during the 1980s.

[1]

.....
.....

(d) Explain how the data in **Figure 3** can be used in judging the success of the Montreal Protocol in addressing ozone depletion.

[4]

.....
.....
.....
.....
.....
.....
.....
.....



Section B

Answer **two** questions. Answers must be written within the answer boxes provided.

4. (a) Outline the processes by which a species may evolve a greater tolerance to higher temperatures. [4]
- (b) Explain how the atmosphere plays a role in maintaining life-supporting temperatures over the Earth’s surface. [7]
- (c) In addressing environmental issues, mitigation strategies may be seen as primarily ecocentric and adaptation strategies as primarily technocentric.
- To what extent is this view valid in the context of named strategies for addressing the issue of global warming? [9]
5. (a) Outline the procedures in a laboratory-based method to find the gross productivity for a population of named aquatic animals in terms of biomass per day. [4]
- (b) Explain how acid deposition falling on a forest may impact a nearby aquatic ecosystem. [7]
- (c) When harvesting is limited to the sustainable yield, associated processes involved in a food production system may still make the production unsustainable.
- In this context, to what extent can aquatic food production systems be truly sustainable? [9]
6. (a) With reference to **four** different properties of a soil, outline how each can contribute to high primary productivity. [4]
- (b) Explain how the level of primary productivity of different biomes influences their resilience. [7]
- (c) Discuss the role of feedback mechanisms in maintaining the stability and promoting the restoration of plant communities threatened by human impacts. [9]
7. (a) Identify **four** ways to ensure reliability of the mark–release–recapture method in estimating population size. [4]
- (b) Explain how the interactions between a species and its environment give rise to the S-shape of its population growth curve. [7]
- (c) The future growth of human populations is unlikely to be limited by the availability of energy resources. However, they could easily be limited by the impacts of energy production.
- Discuss the validity of this statement. [9]



A large rectangular area containing horizontal dotted lines for writing.



24EP09

Turn over

A large rectangular area containing horizontal dotted lines for writing.



24EP10

A large rectangular area containing horizontal dotted lines for writing.



24EP11

Turn over

A large rectangular area containing 25 horizontal dotted lines, intended for writing or drawing.



24EP12

A large rectangular area containing horizontal dotted lines for writing.



24EP13

Turn over

A large rectangular area containing horizontal dotted lines for writing.



A large rectangular area containing horizontal dotted lines for writing.



24EP15

Turn over

A large rectangular area containing horizontal dotted lines for writing.



24EP16

A large rectangular area containing 25 horizontal dotted lines, intended for handwritten notes or answers.



24EP17

Turn over

A large rectangular area containing horizontal dotted lines, intended for writing or printing text.



24EP18

A large rectangular area containing horizontal dotted lines for writing.



24EP19

Turn over

A large rectangular area containing horizontal dotted lines for writing.



24EP20

A large rectangular area containing horizontal dotted lines for writing.



24EP21

Turn over

A large rectangular area containing horizontal dotted lines, intended for handwritten text.



24EP22

A large rectangular area containing horizontal dotted lines for writing.



References:

Figure 2 With permission from GRID-Arendal. Source adapted.

Figure 3 NASA Ozone Watch.

All other texts, graphics and illustrations © International Baccalaureate Organization 2021



24EP24